

INCOMPARABLE BEAUTY IN BROOKHAVEN

6 BD, 5 1/2 BA EXECUTIVE HOME

3236 INMAN DRIVE

BROOKHAVEN, GEORGIA

MLS # 5652262

NEWLY REDUCED TO JUST \$1,350,000



ELEGANTLY DESIGNED...
EXPERTLY CRAFTED...
EXCLUSIVELY YOU.

WWW.HIGHLIGHTHOMESGA.COM

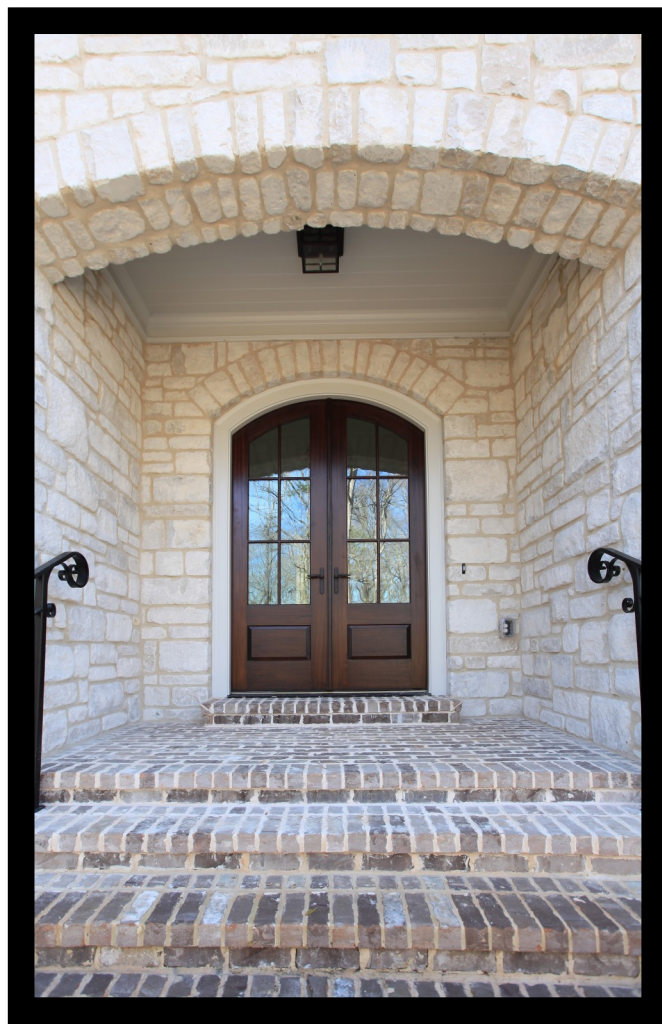
678-873-9234



HIGHLIGHT
— HOMES, LLC —

ATLANTA'S PREMIER CUSTOM HOME BUILDER

PREMIER CUSTOM HOME BUILDER – HIGHLIGHT HOMES – IS NEARING COMPLETION OF ANOTHER STUNNING SEMI-CUSTOM HOME IN THE HIGHLY SOUGHT AFTER BROOKHAVEN NEIGHBORHOOD OF ATLANTA. SHOWCASING THE INCREDIBLE CRAFTSMAN-INSPIRED ASPEN MANOR FLOORPLAN, THIS BEAUTIFUL HOME – LOCATED AT 3236 INMAN DRIVE – BOASTS 6100 SQUARE FEET OF AWESOMENESS WITH 3 FLOORS, 6 SPRAWLING BEDROOMS, 5.5 SPA-THEMED BATHROOMS, 2 CAR GARAGE WITH CARRIAGE DOORS + AN ADDITIONAL DETACHED 2 CAR GARAGE, FINISHED BASEMENT, GORGEOUS GOURMET KITCHEN AND SPACIOUS OPEN FLOOR PLAN. WHAT IS PERHAPS MOST SURPRISING ABOUT THIS FANTASTIC FIND IS THAT IT IS NEWLY PRICED AT JUST \$1,350,000 AND MOVE-IN READY. ARE YOU READY



FOR LIFE INSIDE THIS
DRAMATICALLY DISTINCTIVE
DOMICILE.?





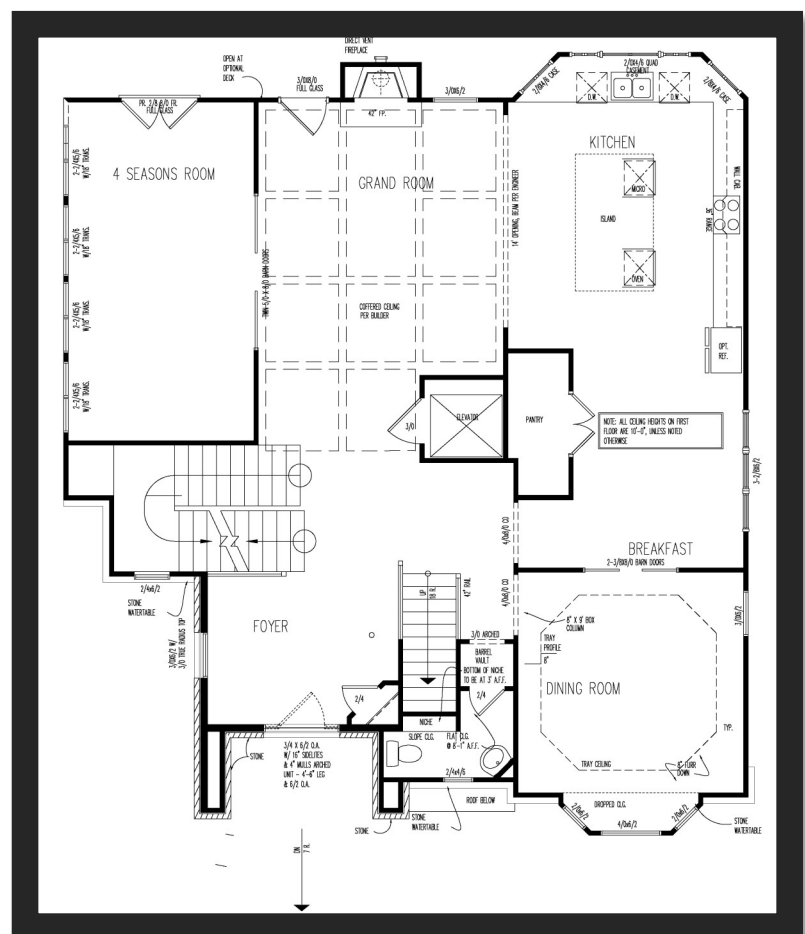
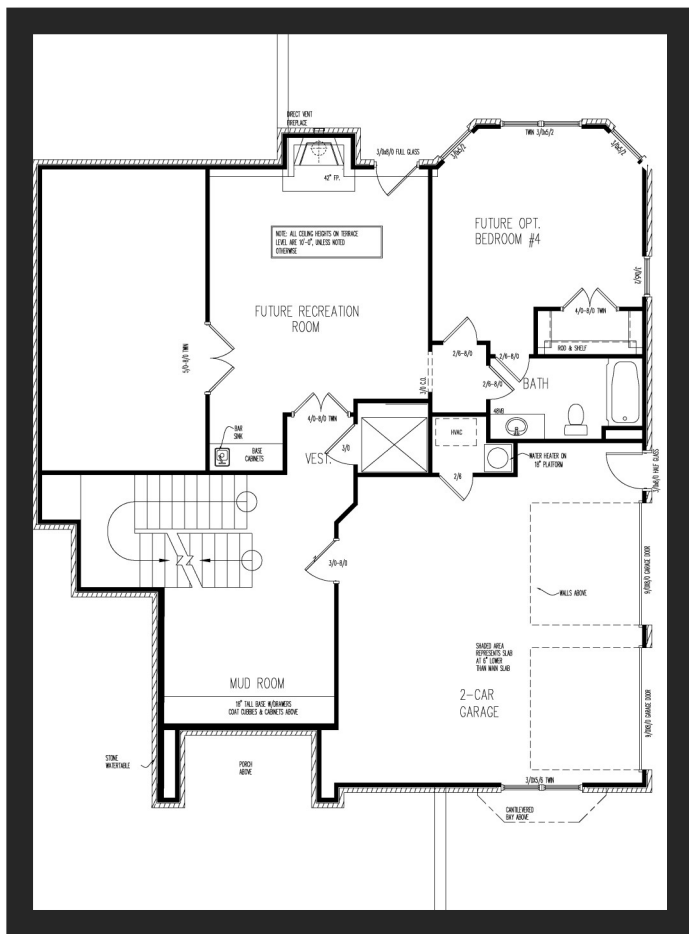
A TERRIFIC HOME FOR THE FAMILY WHO LOVES TO ENTERTAIN, THE EXPANSIVE GRAND ROOM – WHICH FEATURES A 10' COFFERED CEILING, STACKED STONE FIREPLACE AND WALL OF WINDOWS – OPENS ONTO A SPRAWLING VERANDA WITH OUTDOOR HEARTH OVERLOOKING THE PRIVATE YARD. THE ENORMOUS GOURMET KITCHEN IS FLANKED ON EITHER SIDE BY A FORMAL

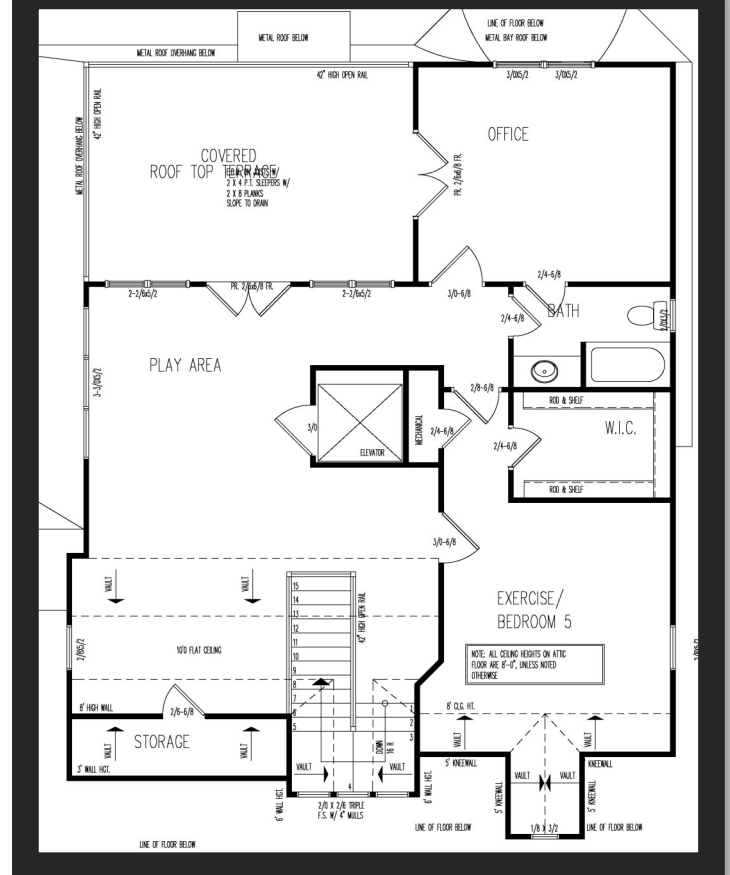
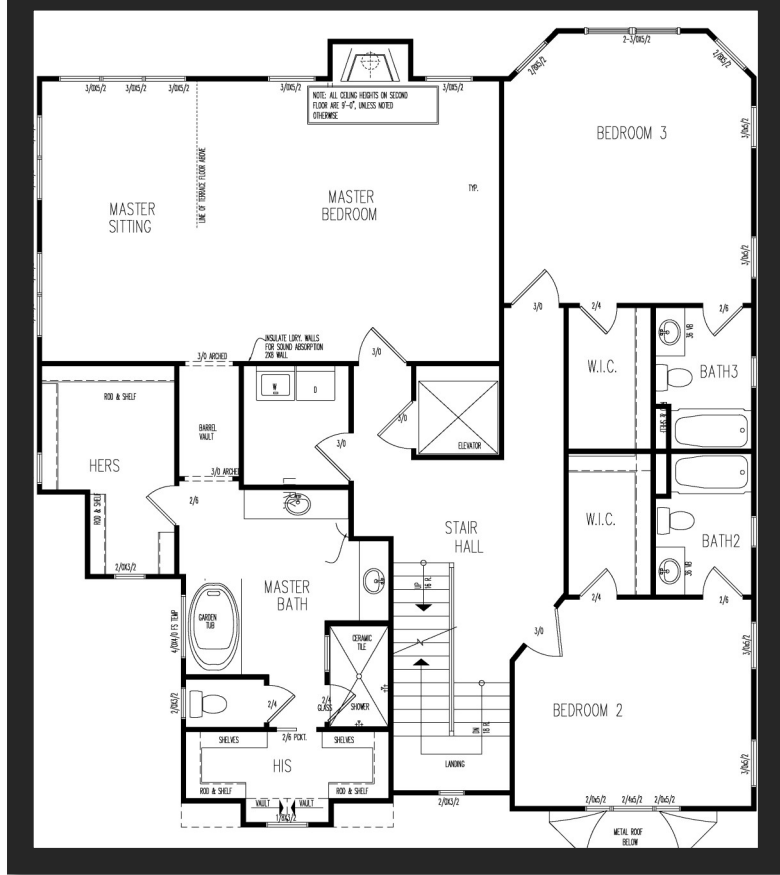
DINING ROOM AND BRIGHT AND AIRY BREAKFAST ROOM. THE MAIN LEVEL ALSO OFFERS A SMALL WINE CELLAR FOR WOULD-BE WINE AFICIONADOS AND A SUNROOM WITH A CHIC PAIR OF SLIDING BARN DOORS. JUST UPSTAIRS, THE LARGE MASTER SUITE WITH FIREPLACE, SPA-INSPIRED BATH, HIS AND HER WALK-IN CLOSETS, SITTING ROOM, PORCH AND ADJOINING MASTER RETREAT ENCOMPASSES MORE THAN HALF OF THE ENTIRE SECOND STORY. TWO SPACIOUS SECONDARY BEDROOMS WITH JACK-AND-JILL BATH AND A LAUNDRY ROOM MAKE UP THE REST. ON THE THIRD LEVEL, A FOURTH BEDROOM WITH WALK-IN CLOSET AND FULL BATH BORDERS A GENEROUSLY PROPORTIONED FLEX SPACE THAT CAN SERVE AS A PLAYROOM, REC ROOM OR MEDIA ROOM. THIS FLOOR ALSO FEATURES A WONDERFUL OUTDOOR LIVING SPACE

THAT IS COMPRISED OF A COVERED PORCH AND ROOFTOP TERRACE.

EVERY BIT AS ATTRACTIVE FROM THE OUTSIDE AS IT IS ON THE INSIDE, THE HOME IS SITUATED ON A PICTURESQUE LOT SET BACK ON A WINDING TREE-LINED DRIVE. THE FACT THAT IT OVERLOOKS A PROTECTED BIRD SANCTUARY ALLOWS FOR AN ABUNDANCE OF NATURAL BEAUTY AND PRIVACY. SITUATED ON ONE OF THE CITY'S MOST SCENIC STREETS, SURROUNDED BY MULTI-MILLION DOLLAR HOMES – THIS NEW CONSTRUCTION HOME IS POISED NEAR PEACHTREE GOLF CLUB AND TOWN BROOKHAVEN.

TOWN BROOKHAVEN IS A VIBRANT LIVE-WORK-PLAY DEVELOPMENT THAT FEATURES SUCH POPULAR RETAILERS AS COSTCO AND MARSHALLS, AS WELL AS A COLLECTION OF





SPECIALTY BOUTIQUES LIKE DRESS UP AND BOOGALOOS, A CINEBISTRO, AND A SLEW OF GREAT RESTAURANTS AND PUBS. CHILDREN LIVING HERE WILL HAVE AN OPPORTUNITY TO ATTEND MONTGOMERY ELEMENTARY, CHAMBLEE MIDDLE AND CHAMBLEE CHARTER HIGH SCHOOLS OR THE HIGHLY REVERED PRIVATE MARIST SCHOOL – WHICH RECENTLY LANDED AT #9 OF 100 BEST PRIVATE HIGH SCHOOLS IN GEORGIA (NICHE RANKINGS). TO SCHEDULE A PRIVATE TOUR, CONTACT MELANIE POURHASSAN OF KELLER WILLIAMS REALTY AT 404-531-5700 (OFFICE) OR 678-873-9232 (CELL). SHE CAN ALSO BE REACHED VIA E-MAIL AT MELANIEHP@KW.COM. FOR MORE INFORMATION ABOUT NEW CONSTRUCTION HOMES, CUSTOM HOMES AND LUXURY RENOVATIONS BY HIGHLIGHT HOMES – PLEASE VISIT

WWW.HIGHLIGHTHOMESGA.COM



HIGHLIGHT

— HOMES, LLC —

