

ELEGANT 5 BEDROOM, 5.5 BATHROOM LUXURY HOME

1431 HEARST DRIVE

BROOKHAVEN, GEORGIA

MLS # 5620421

OFFERED AT \$1,499,000—SOLD!



ELEGANTLY DESIGNED...  
EXPERTLY CRAFTED...  
EXCLUSIVELY YOU.

[WWW.HIGHLIGHTHOMESGA.COM](http://WWW.HIGHLIGHTHOMESGA.COM)

678-873-9234



HIGHLIGHT

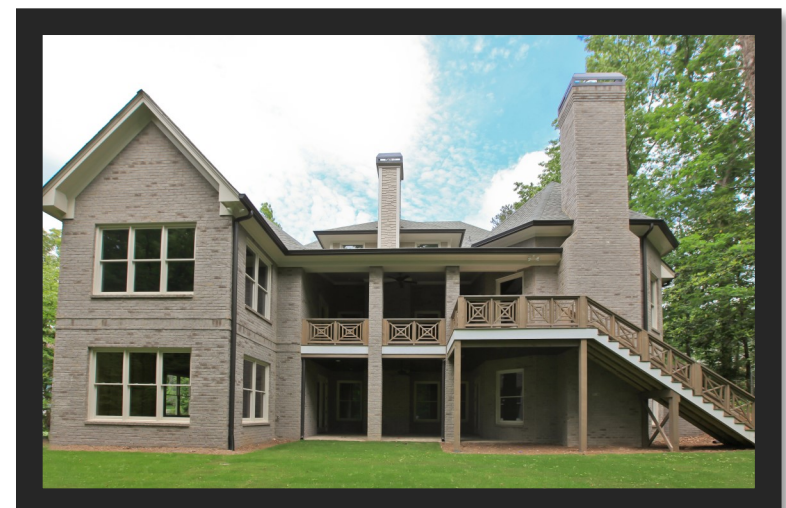
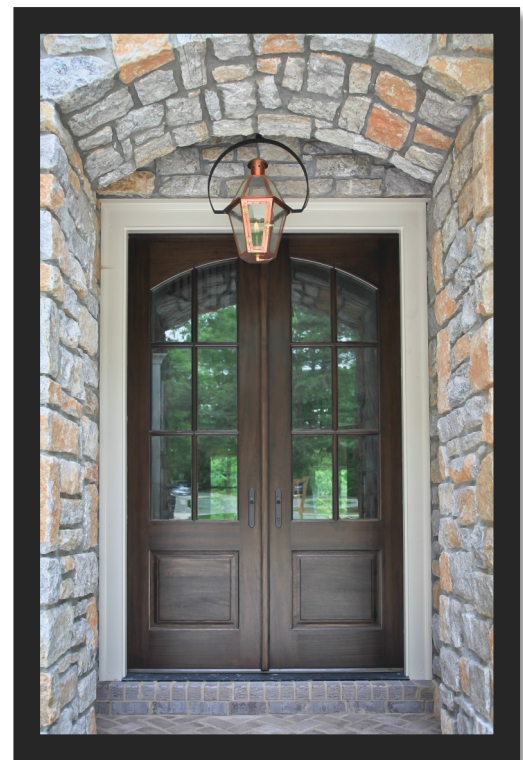
— HOMES, LLC —

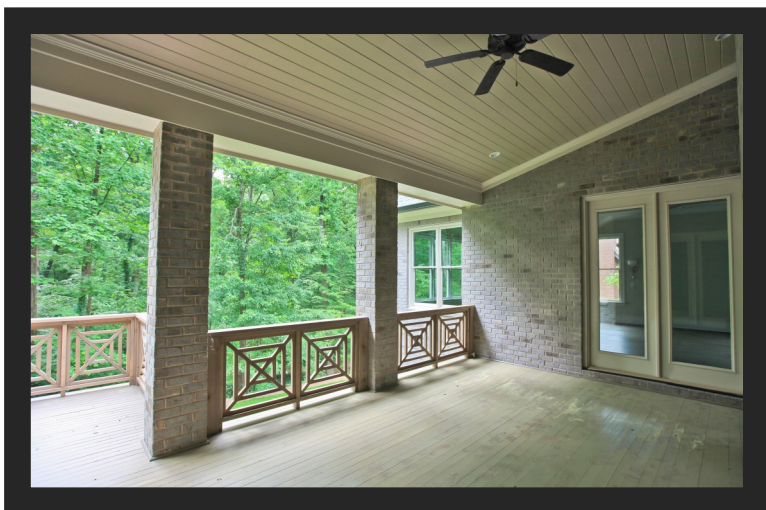
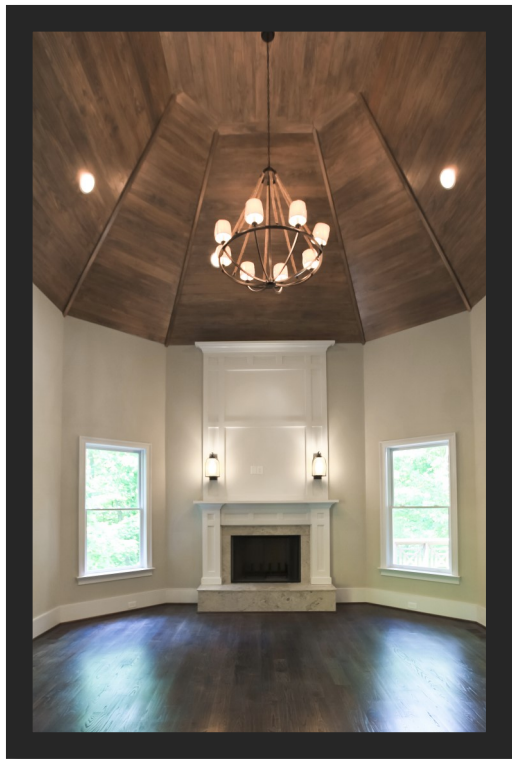
ATLANTA'S PREMIER CUSTOM HOME BUILDER



# STONEFRONT SOPHISTICATION AND SOUTHERN HOSPITALITY IN BROOKHAVEN

EXUDING SOPHISTICATION, STYLE AND AN UNDENIABLE AIR OF SOUTHERN HOSPITALITY, THE SEMI-CUSTOM HOME – LOCATED AT 1431 HEARST DRIVE IN BROOKHAVEN – IS LOADED WITH DISTINCTIVE FEATURES AND AWE-INSPIRING ARCHITECTURAL TOUCHES... INSIDE AND OUT. FROM THE MOMENT YOU FIRST SEE THE HOME – WITH ITS CUSTOM BRICK ROUNDABOUT ON THE DRIVE, EXQUISITELY CURVED ROOF LINE OVER THE CARRIAGE HOUSE-INSPIRED GARAGES, AND BEAUTIFULLY PAIRED STONE AND BRICK FAÇADE – YOU’LL KNOW YOU’RE IN FOR SOMETHING TRULY SPECIAL JUST BEYOND THOSE ELEGANT FRONT DOUBLE DOORS.

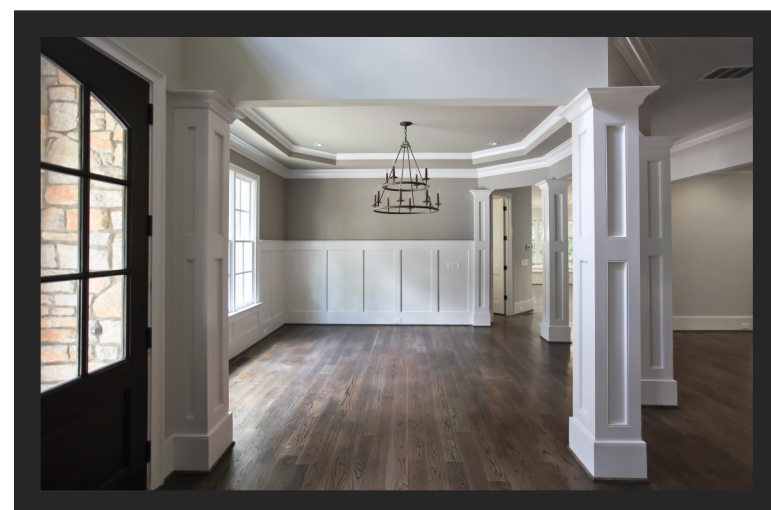
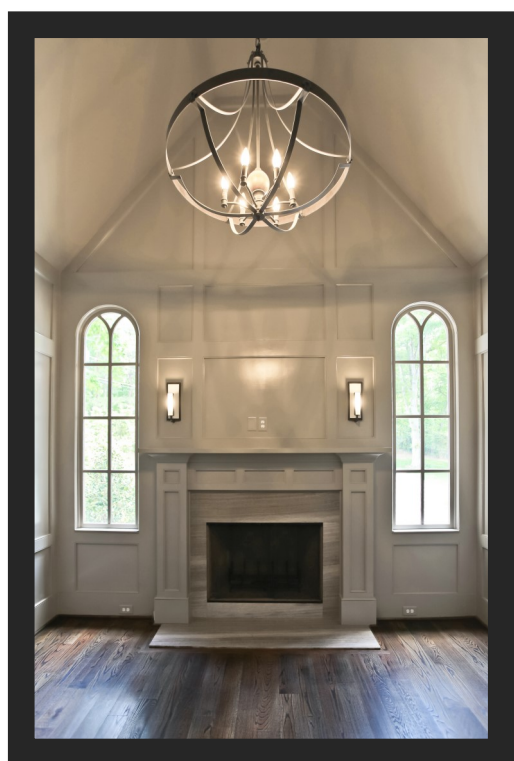
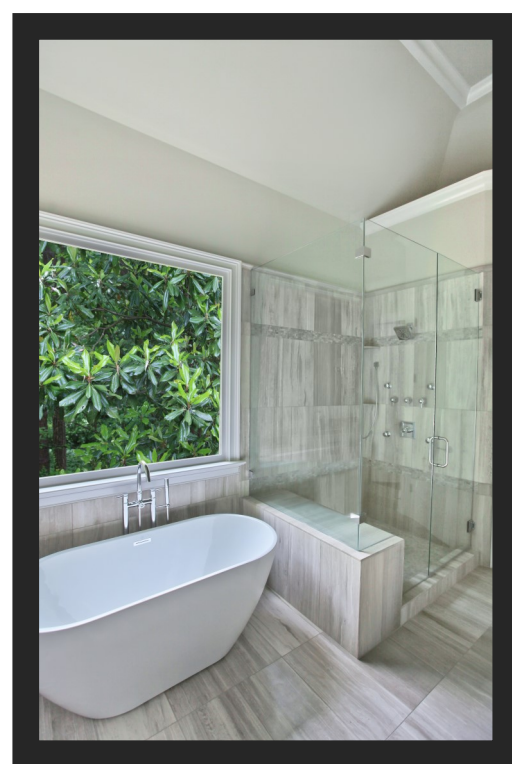
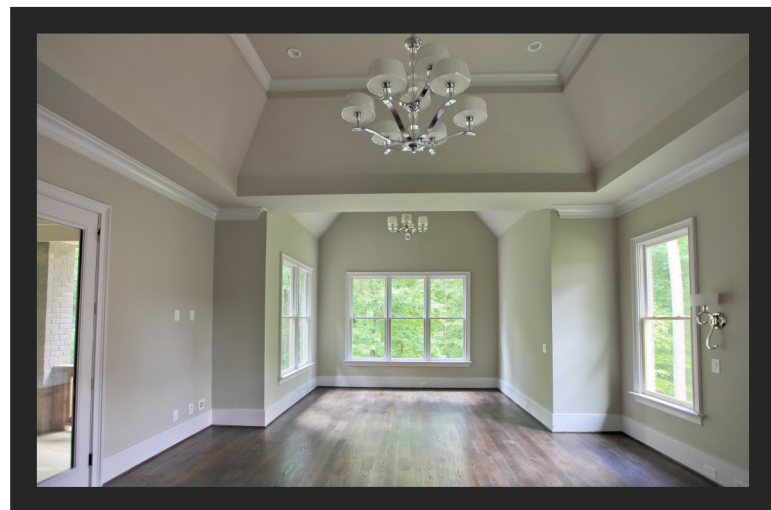


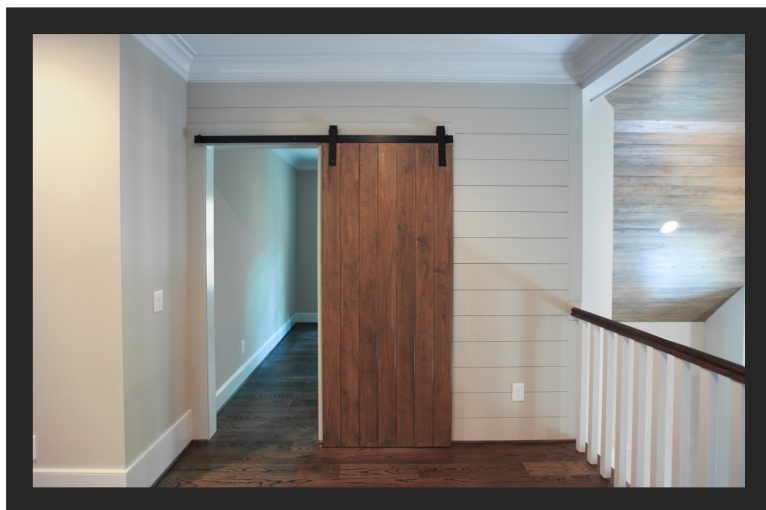
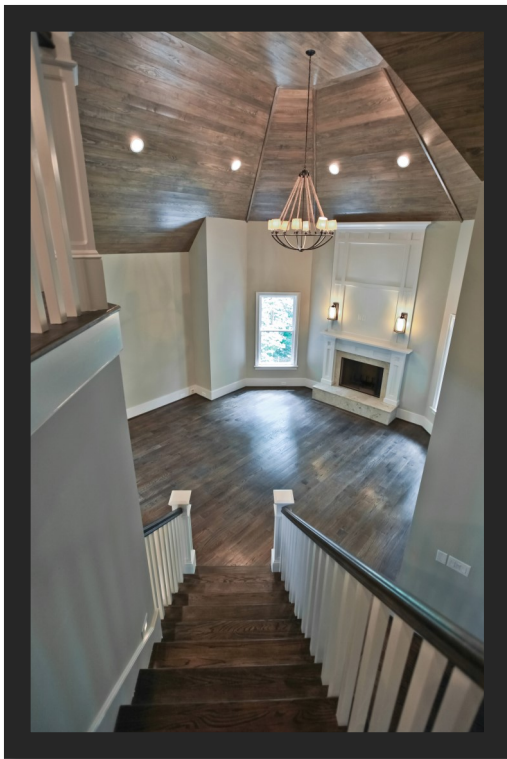
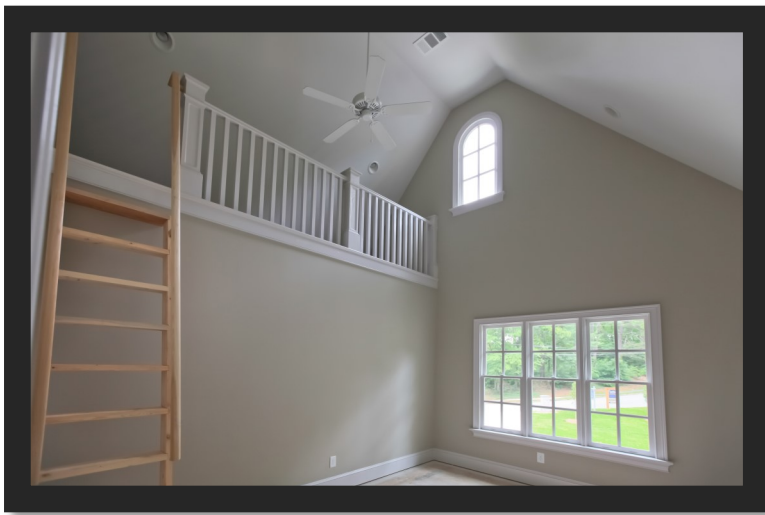


INCREDIBLY PRICED AT JUST \$1,499,000 AND WEIGHING IN AT 5900 SPRAWLING SQUARE FEET, THE HOME FEATURES SIX BEDROOMS, FIVE FULL BATHROOMS, ONE HALF BATHROOM, THREE FIREPLACES, A FINISHED DAYLIGHT BASEMENT, AND THREE CAR GARAGE. IDEALLY SUITED FOR THE FAMILY WHO LOVES TO ENTERTAIN, THE MAIN LEVEL BOASTS AN OPEN FLOORPLAN WITH LARGE GOURMET KITCHEN THAT FEATURES CRISP WHITE CABINETRY PAIRED WITH WHITE MARBLE COUNTERTOPS AND STAINLESS STEEL TOP-OF-THE-LINE THERMADOR® APPLIANCES. THE KITCHEN OPENS ONTO A TRULY STUNNING FAMILY ROOM WITH A SOARING WOOD-LINED CATHEDRAL CEILING. FRENCH DOORS BECKON GUESTS OUTDOORS TO THE COVERED PORCH OVERLOOKING A DELIGHTFULLY PRIVATE BACKYARD.



THE LOVELY MASTER-ON-MAIN, WHICH FEATURES A LARGE SITTING ROOM WITH ACCESS TO THE COVERED PORCH, ALSO OVERLOOKS THE BACKYARD AND BOASTS HARDWOOD FLOORS AND A GORGEOUS SPA-INSPIRED MASTER BATH. THE MAIN FLOOR ALSO SHOWCASES STUNNING FORMAL DINING AND LIVING ROOMS, PRIVATE STUDY, BREAKFAST ROOM, BUTLER'S PANTRY, MUDROOM AND LARGE LAUNDRY ROOM.





THE UPPER LEVEL OF THE HOME PROVES EQUALLY IMPRESSIVE WITH FOUR SECONDARY BEDROOMS – ONE OF WHICH IS A SPRAWLING PRINCESS SUITE, FOUR FULL BATHROOMS, AND A LOFT IN THE ATTIC SPACE ABOVE ONE OF THE BEDROOMS (MAKING IT THE IDEAL SPACE FOR A TEEN SUITE!). THERE ARE ALSO A COUPLE OF FLEXIBLE LIVING SPACES THAT COULD SERVE AS A GYM, MEDIA ROOM, STUDY, CRAFT ROOM AND MORE – WHATEVER MIGHT BEST FIT YOUR FAMILY'S INDIVIDUAL NEEDS AND COLLECTIVE PERSONALITY.



NESTLED BETWEEN SILVER LAKE AND PEACHTREE GOLF CLUB, THE HOME OFFERS CLOSE PROXIMITY TO SHOPPING AND DINING AT THE NEW AND POSITIVELY CHIC TOWN BROOKHAVEN LIVE, WORK, PLAY DEVELOPMENT AND PEACHTREE ROAD FOR AN EASY COMMUTE INTO DOWNTOWN ATLANTA. SCHOOL AGE CHILDREN LIVING HERE WILL HAVE AN OPPORTUNITY TO ATTEND MONTGOMERY ELEMENTARY (WHICH SCORES A 9 OUT OF 10 FROM GREATSCHOOLS!), CHAMBLEE MIDDLE, AND CHAMBLEE CHARTER HIGH SCHOOLS.

***WE'RE SORRY—THIS HOME IS NO LONGER AVAILABLE FOR PURCHASE.***

**FOR MORE INFORMATION ABOUT NEW CONSTRUCTION HOMES, CUSTOM HOMES AND LUXURY RENOVATIONS BY HIGHLIGHT HOMES – PLEASE VISIT  
[WWW.HIGHLIGHTHOMESGA.COM](http://WWW.HIGHLIGHTHOMESGA.COM).**

